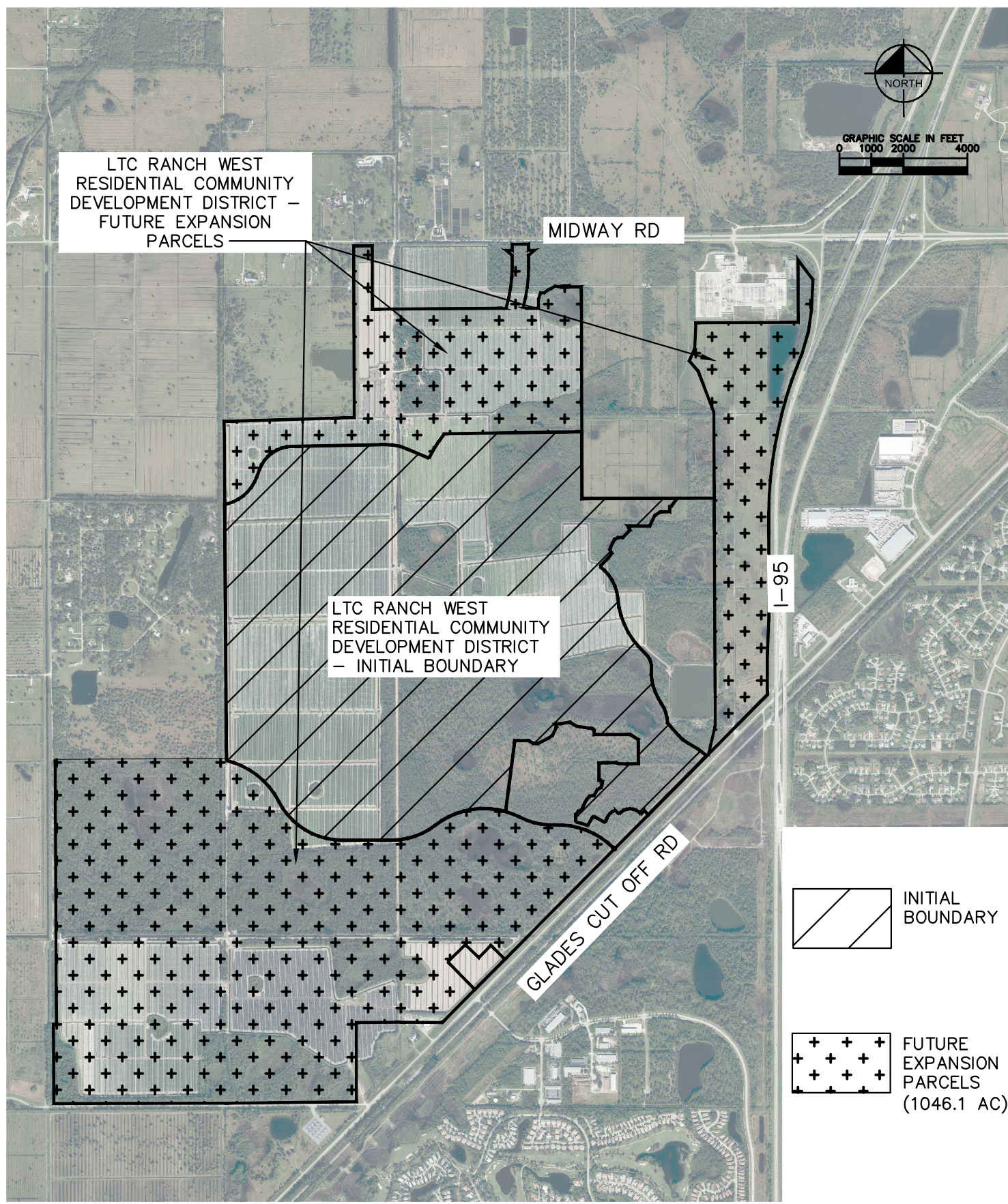


Plotted By: Husainy, Kinan Sheet Set: Kha Layout: FUTURE CDD LIMITS February 16, 2021 10:52:07am K:\VRB_LDEV\LTC Ranch\CDD\Initial Application\PETITION EXHIBITS.dwg
This document, together with the concepts and designs presented herein, as an instrument of service, is intended only for the specific purpose and client for which it was prepared. Reuse of and improper reliance on this document without written authorization and adaptation by Kimley-Horn and Associates, Inc. shall be without liability to Kimley-Horn and Associates, Inc.



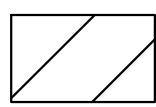
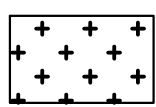
LTC RANCH WEST
RESIDENTIAL COMMUNITY
DEVELOPMENT DISTRICT –
FUTURE EXPANSION
PARCELS

MIDWAY RD

LTC RANCH WEST
RESIDENTIAL COMMUNITY
DEVELOPMENT DISTRICT
– INITIAL BOUNDARY

I-95

GLADES CUT OFF RD

-  INITIAL BOUNDARY
-  FUTURE EXPANSION PARCELS (1046.1 AC)

Kimley»Horn

© 2021 KIMLEY-HORN AND ASSOCIATES, INC.
445 24TH STREET, SUITE 200, VERO BEACH, FL 32960
PHONE: 772-794-4100
WWW.KIMLEY-HORN.COM CA 0000696

LTC RANCH WEST RESIDENTIAL CDD
FUTURE EXPANSION PARCELS

SHEET NUMBER
EX-3